

Nature Education Center Młynarzówka



Narew National Park has adapted and expanded the existing building of the "Młynarzówka" for the needs of the nature education centre. The centre consists of two connected buildings: a historical part and a newly built part. "Młynarzówka" consists of an educational part and a management centre for protected areas. This historical building dates back to the 1920s and is listed in the Register of Monuments. The new part houses an exhibition and conference room. The project took part in the national competition "Modernisation of the Year & Construction of the 21st Century". Appropriate exposure of the qualities of nature requires interiors that do not overwhelm, but emphasize and harmonize with the unique character of the exhibition. When designing the interior, the architect looked for materials with a rich and natural design. Because the exhibition building is subject to wear due to heavy visitor traffic, the materials had to be durable and easy to maintain. Forbo's Flotex floor coverings met all criteria perfectly. Once the interior was completed, the effect exceeded the expectations. The floor coverings are ideal for the exhibition and lecture rooms and emphasize the nature of the building and its exhibits.

Location	Kurowo, Poland
Date of completion	2021
Architect	Studio-A Pracownia Projektowa mgr inż. arch. Jan K. Hahn Białystok
Installation by	JUST Białystok Sławomir Chapunik
Photographer	orlowski.photo

Used Products

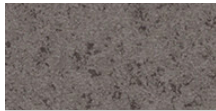




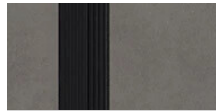
Flotex Concrete planks
Concrete storm



Flotex Box-cross planks
Box-cross pearl



Sarlon 15 dB
Material
medium grey



Sarlon Complete
Step
elephant



